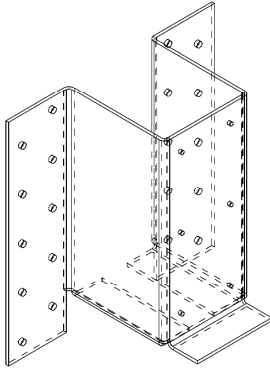


Installation Instruction



The Metwood MTWDeck Bracket can be utilized on structures with stone or masonry veneer as an alternate deck ledger connection. The following steps demonstrate proper application of the MTWDeck Bracket.

ALLOWABLE LOADS FOR MTWDECK BRACKET

Fastening					Allowable Design Loads ^(4,6)			
Brackets to Wood Rim Joists ^(1,5)		Wood Deck Ledger to Brackets ⁽²⁾		Wood Members Specific Gravity ⁽³⁾	Wind Uplift C _D = 1.6	Vertical (Downward)		
Qty.	Type	Qty.	Type			Live Load C _D = 1.0	Snow Load C _D = 1.0	Construction Load C _D = 1.0
20	Simpson Strong-Tie, 1/4" x 3" Strong-Drive Screw (ICC-ES ESR-2236)	6	Type 7, 1/4-20 x 2 1/2" Dril-Flex Self-Drilling Structural Fastener (ICC-ES ESR-3332)	0.55	2,133 lbs	2,600 lbs	2,990 lbs	3,250 lbs

⁽¹⁾ Wood rim joists must consist of double blocked 2x members, with sufficient width to mount the MTWDeck Brackets.

⁽²⁾ Self-drilling screws must penetrate through the steel bracket, at the designated pre-drilled holes in the MTWDeck Bracket, with a minimum of three threads protruding past the wall thickness of the bracket.

⁽³⁾ Installation using wood members of lesser specific gravity may result in lower allowable design loads.

⁽⁴⁾ Allowable loads apply to connection of wood members with an installed or in-service moisture content of 19% or less, and wood members that will experience sustained exposure to elevated temperatures up to 100° F.

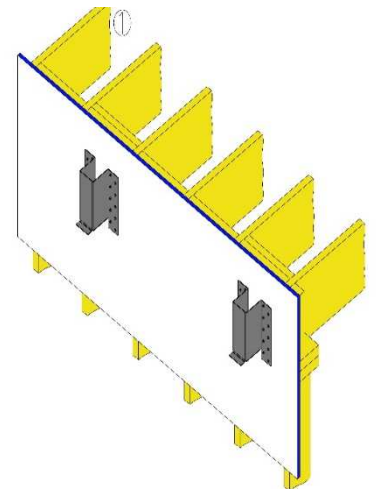
⁽⁵⁾ All MTWDeck Brackets shall be flashed to prevent water from contacting the house band joist.

⁽⁶⁾ All other connections and designs of a wood-framed deck shall be in accordance with Section R507 of the 2012 and/or 2015 IRC

Step 1: Attach Bracket to Structure utilizing the (20) Fasteners in BAG #1. Space Brackets according to TABLE 1.

TABLE 1: MTWDeck Bracket Maximum Spacing

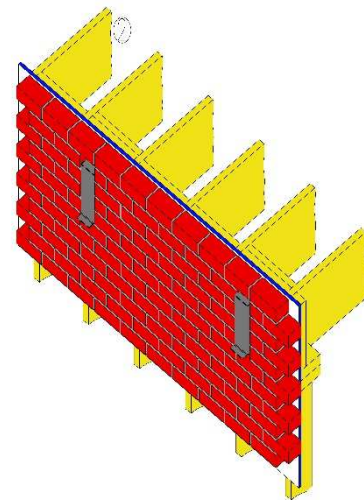
Band of Structure Species	DECK JOIST SPAN LESS THAN OR EQUAL TO: (feet)						
	6	8	10	12	14	16	18
Douglas Fir-Larch and Southern Pine	8-0	8-0	6-0	5-0	5-0	4-0	3-0
Spruce Pine Fir and Hem Fir	8-0	6-0	5-0	4-0	3-0	3-0	3-0



****Please note: The MTWDeck Bracket must be attached to a 2-inch nominal lumber band joist plus an additional 2" nominal lumber blocking that bear on a sill plate or wall plate. If the MTWDeck Bracket is attached to a 1-inch-thick engineered wood product, the 2" nominal blocking is still required.**

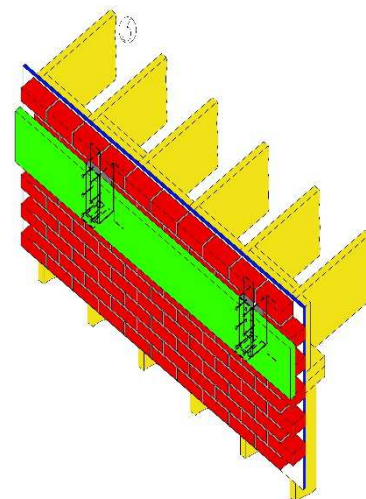
Step 2: Install stone or masonry veneer around the MTWDeck Bracket.

****Please note that all MTWDeck Brackets and Ledgers shall be flashed according to code to prevent water from contacting the house band joist.**

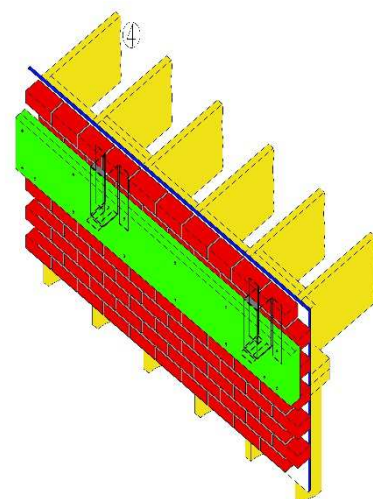
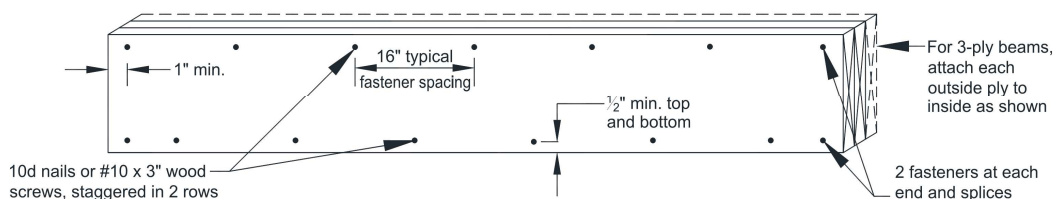


Step 3: Attach Deck Ledger to MTWDeck Bracket with the (6) Self Drilling Fasteners in BAG #2

****Please note that all other connections and design of a wood-framed deck shall be in accordance with Section R507 of the 2012 and 2015 IRC.**



Step 4: Attach additional plies in accordance with Section 507.6 Deck Beams of the 2012 and 2015 IRC.



**CODE
COMPLIANCE**



Intertek
CCRR-0261

For additional information visit
www.metwood.com or call (540) 334-4294